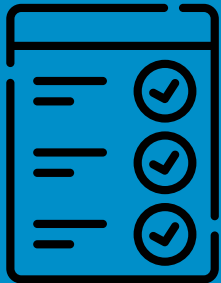


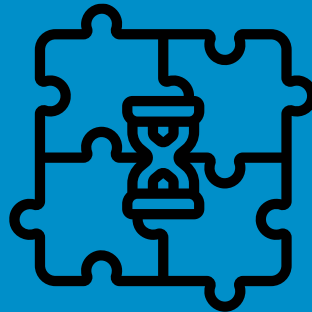
# Sectoral context of safeguarding with LNGOs

- Due diligence processes often include safeguarding capacity assessments

In practice, this has led to



'Tick box'  
approach



Focus on quick  
solutions

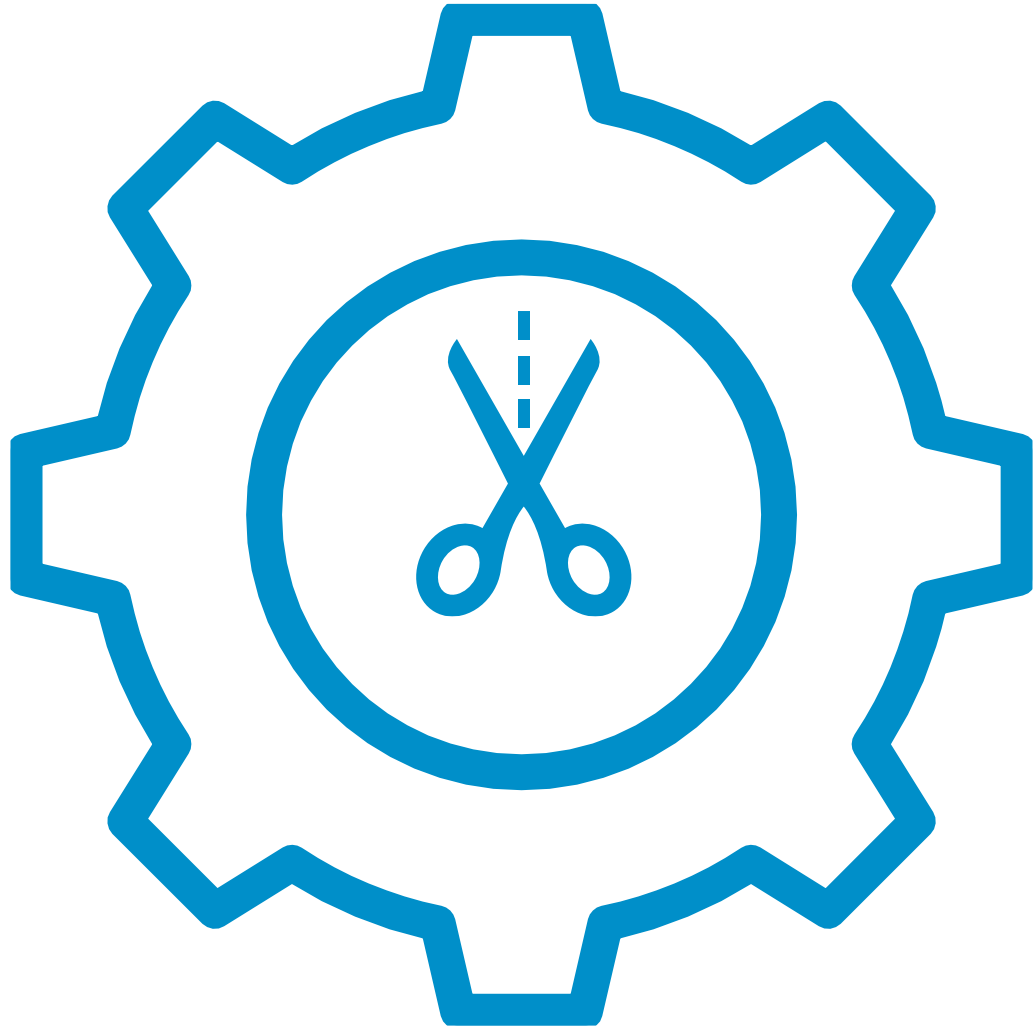


Limited voice of  
local actors

Accompaniment  
was considered  
much more  
effective than  
training

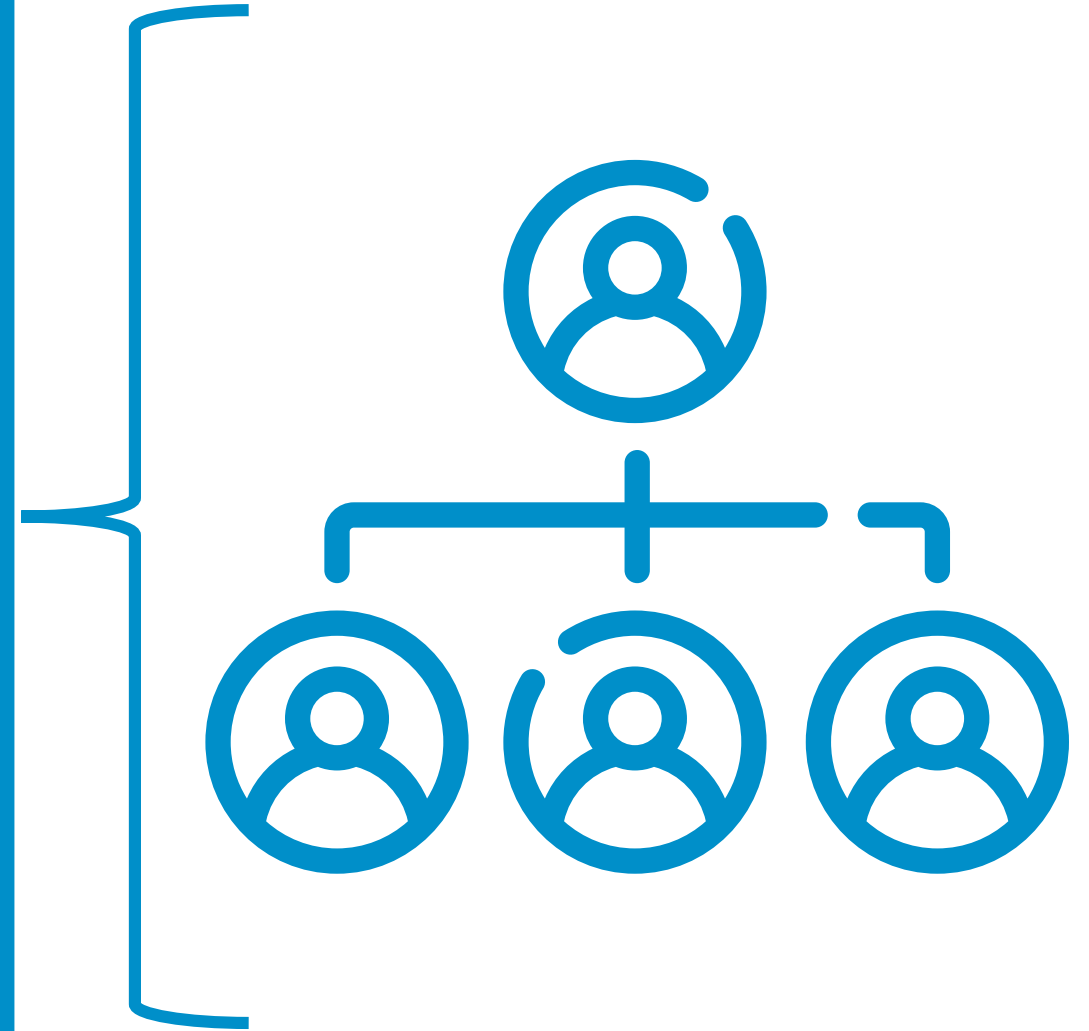


**trócaire**



The use of local consultants supported a tailored response to safeguarding

Safeguarding needs to be supported across the organisation

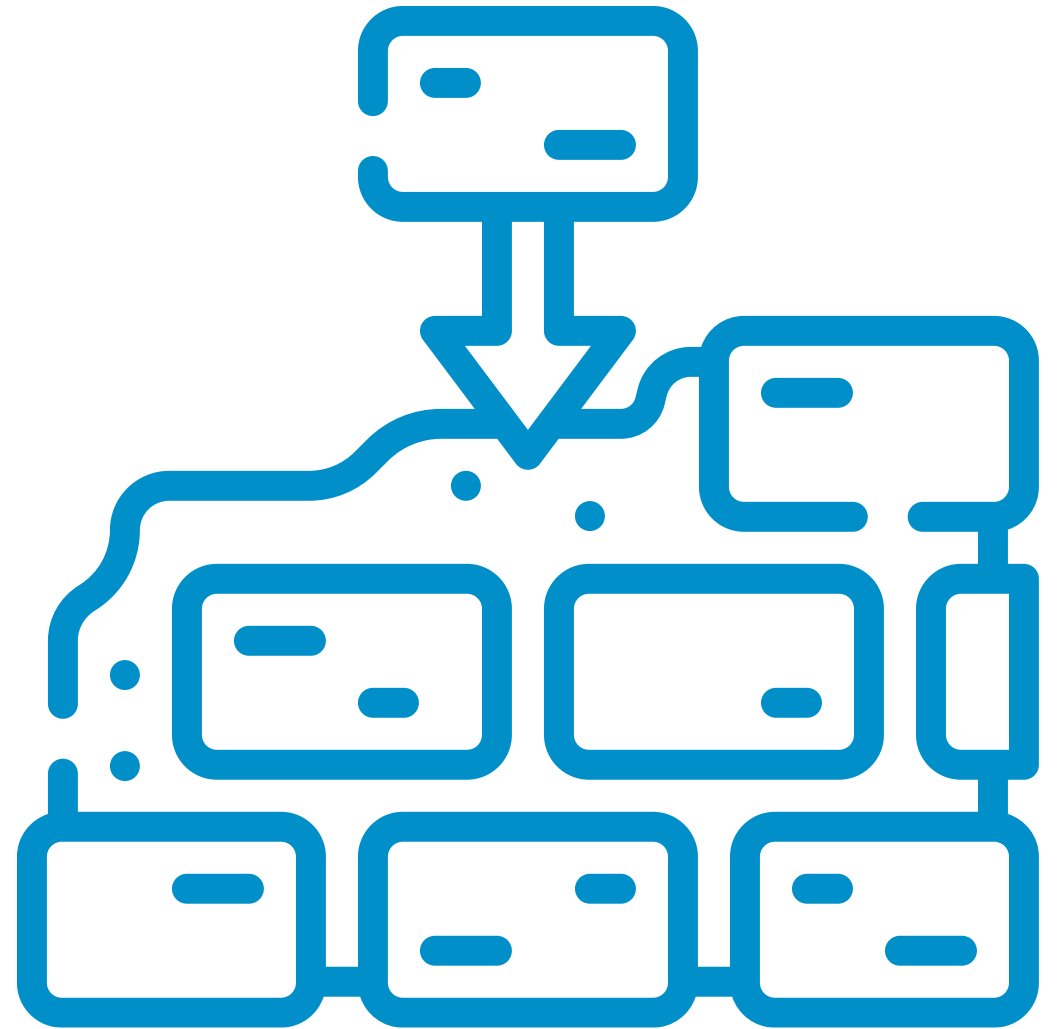




Local consultants  
with lived  
experience of the  
context and  
culture can help  
break down  
potential barriers

**Trōcaire**

Learn from what is  
already there and  
how to embed  
safeguarding in  
existing systems





Safeguarding is a journey and for successful implementation, ongoing resources and accompaniment are needed

# Recommendations

Safeguarding implementation cannot be rushed and requires a consultative model that responds to this

Funding for safeguarding should be part of all institutional funding agreements

Coordination and planning is needed with other agencies to ensure that duplication of support does not occur

Advocacy with donors is needed to ensure partner agencies are given time and a voice in the development of their safeguarding systems